

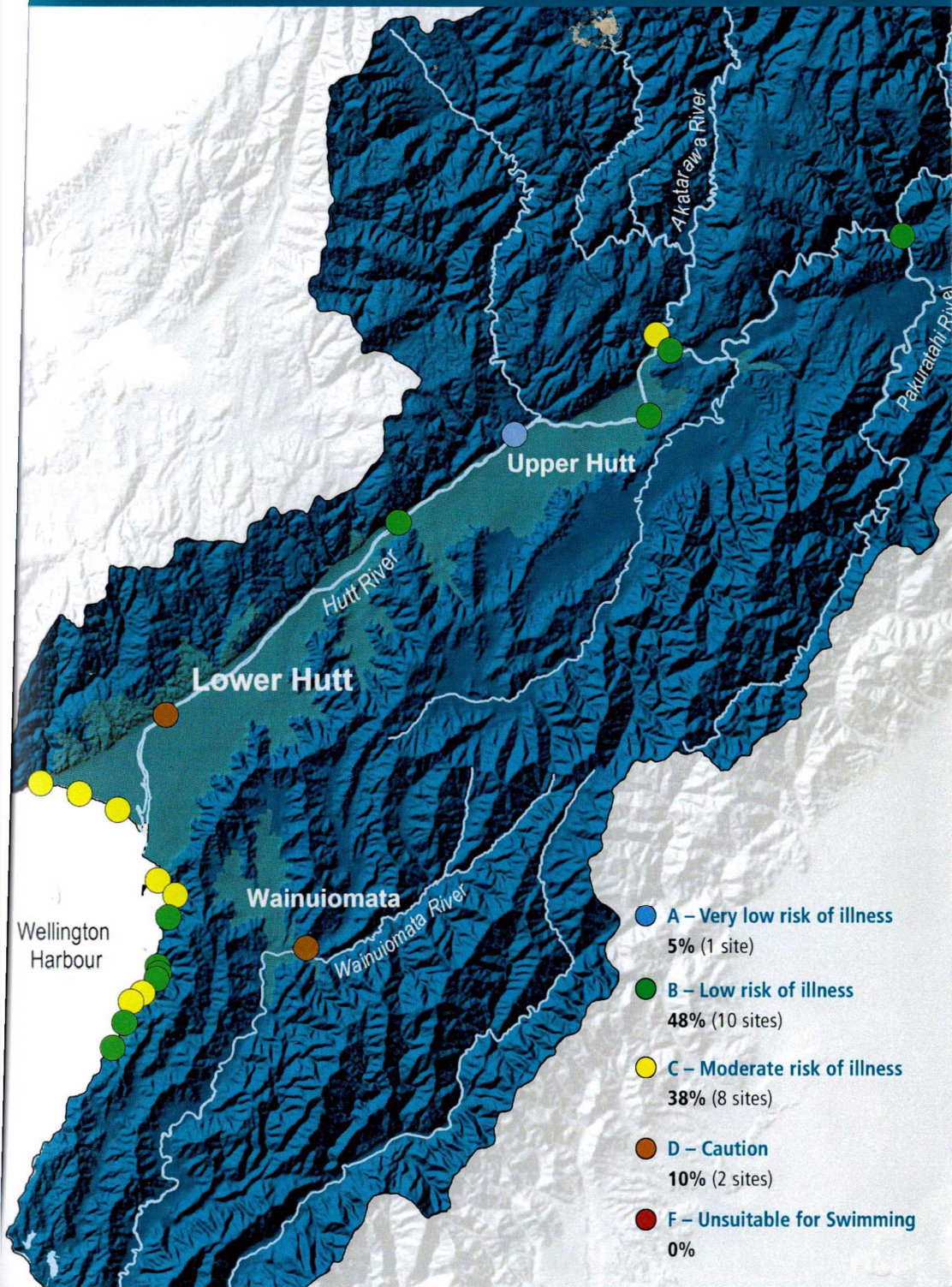
# Is it safe to swim in the Hutt Valley?

Recreational water quality monitoring  
results for the 2015/16 summer



greater WELLINGTON  
REGIONAL COUNCIL  
Te Pane Matua Taiao





## Water quality is generally good, but toxic algae can be a problem during summer

Most of the swimming spots we monitor in the Hutt Valley have good water quality. The best site was Hutt River at Poets Park which had no exceedances of the guideline for safe swimming and an overall grade of A.

The dry summer meant that water quality was particularly good this year. This season there were only five samples that did not meet the guideline for safe swimming compared with 22 last year.

However the warm, stable weather conditions also create perfect conditions for toxic algae growth, which was an issue for the Hutt and Pakuratahi rivers this season. Health warnings were in place at Hutt River sites between Birchville and Silverstream for much of the summer, and at the Pakuratahi River in Kaitoke Regional Park between February and March.

Wait two days after rain  
before you swim again...



Water quality in the Hutt Valley is generally pretty good over the summer, except in poor weather conditions. Heavy rain flushes contaminants from urban and rural land into water and we advise people not to swim for at least two days after heavy rain – even if a site generally has good water quality.

In the Hutt Valley only five of the 405 samples (one percent) taken over summer did not meet the guideline, and all but one of these were associated with rainfall.

Greater Wellington Regional Council, along with your local city council, monitors eight freshwater and 13 coastal sites in the Hutt Valley. The results from this monitoring are compared to national guidelines, and used to calculate an overall grade for each site. In the Hutt Valley two sites are graded A, nine sites are graded B, eight sites are graded C, two sites are graded D and there are no sites graded F.

## 2015/16 Results



Site Name	Number of samples exceeding the guideline	Number of exceedances associated with rainfall	Overall grade*
Petone Beach at water ski club	0	NA	C
Petone Beach at Sydney Street	1	1	C
Petone Beach at kiosk	0	NA	C
Sorrento Bay	0	NA	C
Lowry Bay at Cheviot Road	1	1	C
York Bay	0	NA	B
Days Bay at Wellesley College	0	NA	B
Days Bay at wharf	0	NA	B
Days Bay at Moana Road	0	NA	B
Rona Bay at Cliff Bishop Park	0	NA	C ↑
Rona Bay at wharf	0	NA	C
Robinson Bay at HW Shortt Recreation Ground	1	1	B
Robinson Bay at Nikau Street	1	1	B
Pakuratahi River at Hutt forks	0	NA	B
Akatarawa River at Hutt confluence	0	NA	C
Hutt River at Birchville	0	NA	B ↑
Hutt River at Maoribank Corner	0	NA	B
Hutt River at Poets Park	0	NA	A
Hutt River at Silverstream Bridge	0	NA	B ↑
Hutt River at Melling Bridge	0	NA	D
Wainuiomata River at Richard Prouse Park	1	0	D

\* An arrow beside the grade denotes whether there has been an improvement or decline since the previous season, ie, ↑ means the grade has improved and ↓ means the grade has declined. Note that the overall grade is based on five years of data and grades for freshwater sites are 'dry weather' grades.

For more information on our **Recreational Water Quality Programme** check out [www.gw.govt.nz/is-it-safe-to-swim](http://www.gw.govt.nz/is-it-safe-to-swim)

For further detail on the 2015/16 results check out our **Is it safe to swim?** report at [www.gw.govt.nz/Annual-monitoring-reports](http://www.gw.govt.nz/Annual-monitoring-reports)

For national recreational water quality data and information check out [www.lawa.org.nz](http://www.lawa.org.nz)