



NEWSLETTER 6

NOVEMBER 2008

Alignment chosen for the Boulcott Hutt stopbank

In August 2008, Greater Wellington reached agreement on an alignment for the Boulcott Hutt stopbank. In this newsletter, we outline the programme for completing stopbank construction.

Background

As part of the implementation phase of the Hutt River Floodplain Management Plan, Greater Wellington is constructing a new stopbank through the Boulcott and Hutt golf clubs – the Boulcott Hutt stopbank. This stopbank is necessary to protect the Hutt CBD from potentially devastating floods, and will close the gap between Mills Street and the Kennedy Good Bridge; the existing stopbank ends at Hathaway Avenue before recommencing again at Fairway Drive. Phase one focused on choosing a stopbank alignment and is now complete.

The stopbank alignment

The drawing on the next page shows the chosen stopbank alignment. The stopbank will follow the existing stopbank from Mills Street to the Boulcott clubrooms before cutting across the Boulcott golf course to the boundary of the Boulcott and Hutt golf courses. From the boundary, the stopbank will pass around the front of Hutt clubrooms and will then generally follow the residential boundary of the Hutt golf course.

As part of the stopbank construction Connolly Street will be raised and realigned and the Boulcott clubrooms repositioned either 20 metres into the golf course or to the former Rentokil site.

Thank you

We would like to thank everyone for their contribution in choosing a stopbank alignment; everyone who came along to public meetings, met with Greater Wellington officers, made submissions on their preferred alignment, or simply took an interest in this very important project.

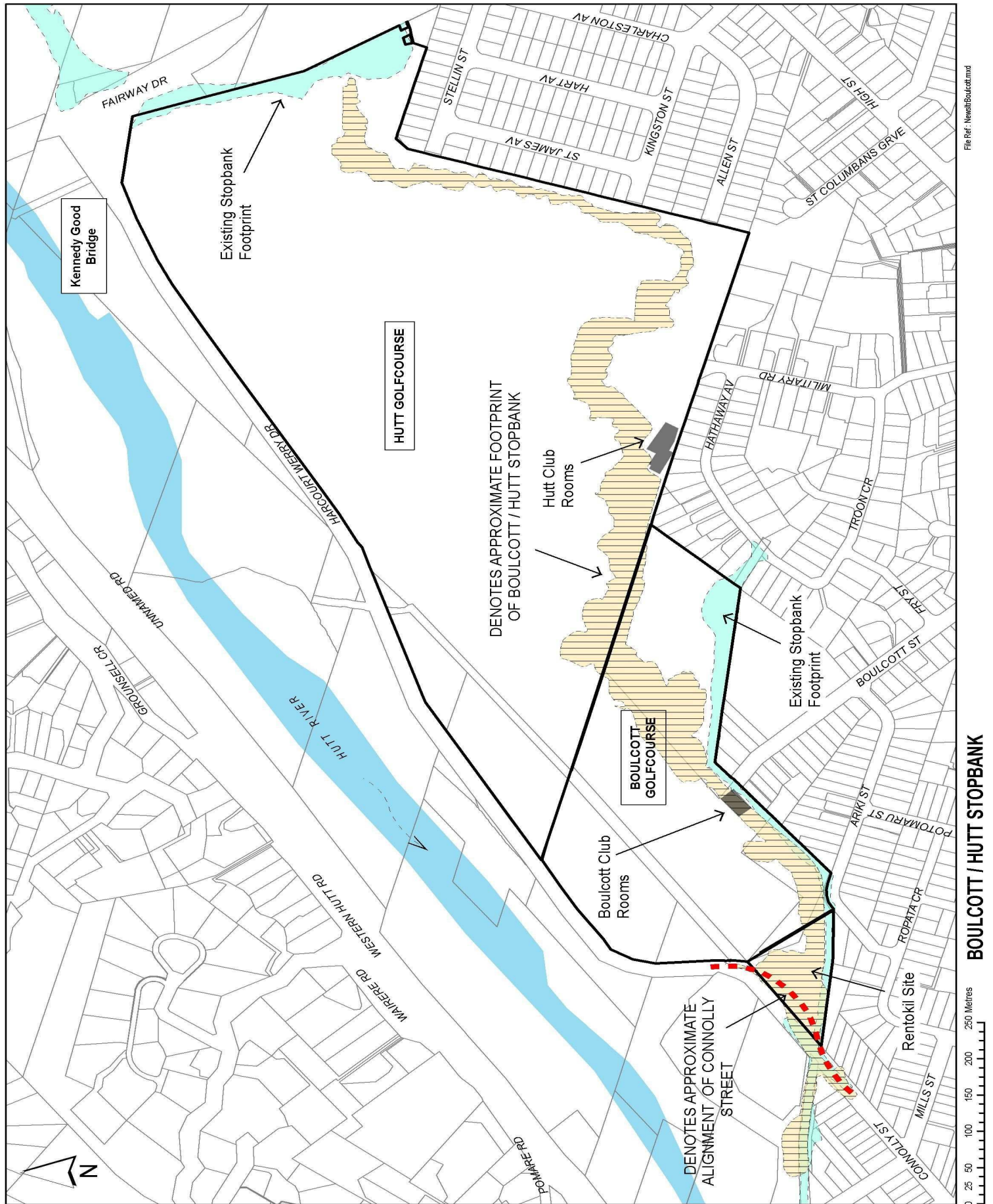
We would especially like to thank and acknowledge our key stakeholders: Hutt City Council, Boulcott Golf Club, Hutt Golf Club, and local residents as this final outcome was only possible with help from them.

What next?

The next phase of the project involves considerable work to refine the chosen stopbank design, complete land entry agreements with the two golf clubs and obtain the designation and resource consents to enable us to start stopbank construction. A designation is a provision in the district plan which indicates to the community that Greater Wellington intends to use the golf clubs' land for a stopbank and associated flood protection works.

We are busy preparing the draft designation and resource consent applications and will be in touch with you early next year to let you know how you can provide feedback to us on these applications.

Once we have the required designation and resource consents, we plan to start stopbank construction in January 2010. The stopbank will be built in sections and completed in four stages.



File Ref: NewsBoulcott.mxd

BOULCOTT / HUTT STOPBANK

FOR FURTHER INFORMATION

Greater Wellington
Regional Council
Wellington
P O Box 11646

Daya Atapattu
Project Manager
Flood Protection

Jacky Cox
Engineer
Flood Protection

Tracy Berghan
Consultant Planner
Flood protection

Publication date November 2008
Publication No. GW/FP- G-08/219

T 04 384 5708
F 04 385 6960
W www.gw.govt.nz

P: 04 801 1047
F: 04 385 6960
E: daya.atapattu@gw.govt.nz

P: 04 802 0332
F: 04 385 6960
E: jacky.cox@gw.govt.nz

P: 04 801 1045
F: 04 385 6960
E: tracy.berghan@gw.govt.nz