

## Objectives

- G. Significant heritage values and features in the parks are identified and protected and interpreted, presented and promoted to the community.
- H. Knowledge, history and stories relating to heritage values in the parks are preserved.
- I. Tangata Whenua are appropriately involved in the management of their cultural heritage.
- J. The community has an understanding and appreciation of the significant heritage values of the parks and is involved in heritage management, and the parks contribute to the community's sense of place in the region.

## Policies

### *Information gathering*

- 28. To identify, protect and preserve information and knowledge related to significant heritage sites and values of the parks:
  - according to national standards and Tangata Whenua tikanga
  - having appropriate regard to relevant privacy issues and cultural requirements.

### *Management and protection*

- 29. To manage historic and cultural heritage features based on their significance and the level and urgency of threat to them.
- 30. To ensure assessments of the "significance" of features take into account:
  - age, rarity and representativeness
  - the nature and level of information available about the features
  - the historical, social, architectural, archaeological, cultural, educational and scientific value of the features
  - whether the features are collective, i.e. part of a wider historical and cultural complex and/or encompassing a number of heritage features.
- 31. To develop conservation plans for significant heritage features as appropriate.
- 32. To restore or enhance degraded heritage areas or features where possible and appropriate.
- 33. To adhere to nationally established procedures where historic and cultural heritage features or artefacts are unearthed (e.g. those established by the Historic Places Act or Antiquities Act).

*Interpretation*

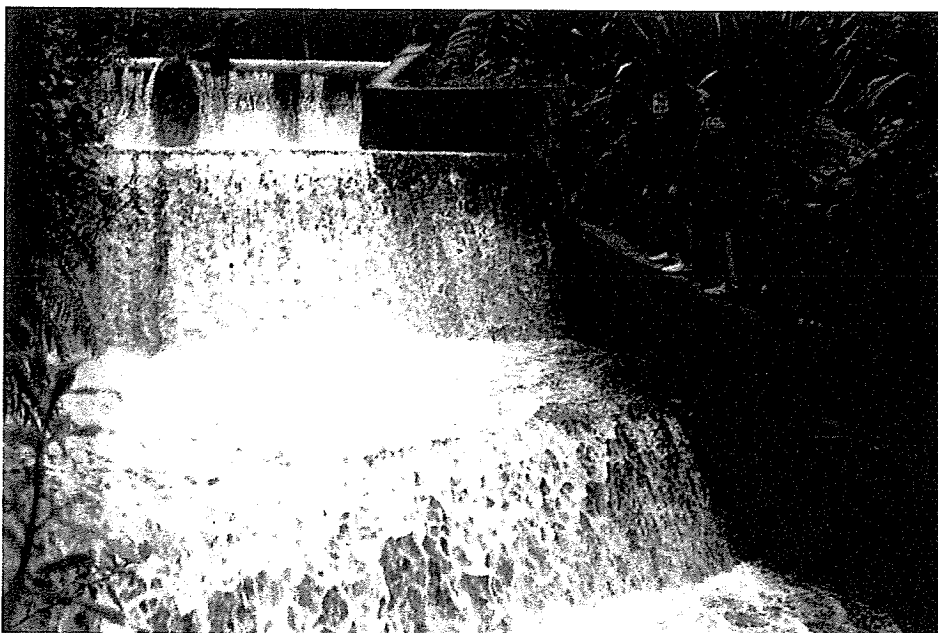
34. To actively inform the public about the heritage values of parks through interpretation, information and events.
35. To present and interpret significant heritage values to the community, except where they may be:
  - at risk from damage or vandalism through increased knowledge or access
  - particularly sensitive areas such as grave sites or wahi tapu, for which greater information and public access could degrade the areas physically or spiritually.

*Working with Tangata Whenua in the management of historic and cultural heritage*

36. To manage sites of significance to Tangata Whenua in a manner determined through consultation, taking into account:
  - nationally and locally established protocols relating to the management of cultural artefacts or human remains
  - Tangata Whenua determination of the disclosure or non-disclosure of sites and information
  - repatriation of artefacts to Tangata Whenua in accordance with the Antiquities Act.

*Involving the community*

37. To work with relevant community groups and historical societies to identify, assess and interpret historical and heritage sites.
38. To encourage a greater awareness of the range and significance of the cultural heritage values and features of the regional parks within the community.



Korokoro Dam (built 1903), Belmont Regional Park  
(SYD MOORE)