



Report 07.346
Date 21 June 2007
File ENV/17/02/01

Committee Environment
Author Katie Mossman, Pollution Control Officer

Pollution Control Report for the period 21 April – 25 May 2007

1. Purpose

To report on incident response, investigation and audit work undertaken by Greater Wellington's Pollution Control Team in the Wellington Region during the reporting period.

2. Background

The Environment Management Division manages environmental pollution via the following:

- 24-hour Incident Response service, addressing pollution complaints, environmental incidents and alleged non-compliance with regional plans.
- *Take Charge*, a pollution prevention programme to improve environmental performance and compliance of small to medium-sized businesses.
- Special Projects, which include the development of resource materials, and targeted investigations to establish baseline conditions, track trends, and characterise environmental problems.

3. Incidents

3.1 Incident summary

A total of 83 incidents were recorded during this reporting period, as summarised in Figure 1. Further information about specific incidents is provided in **Attachment 1**.

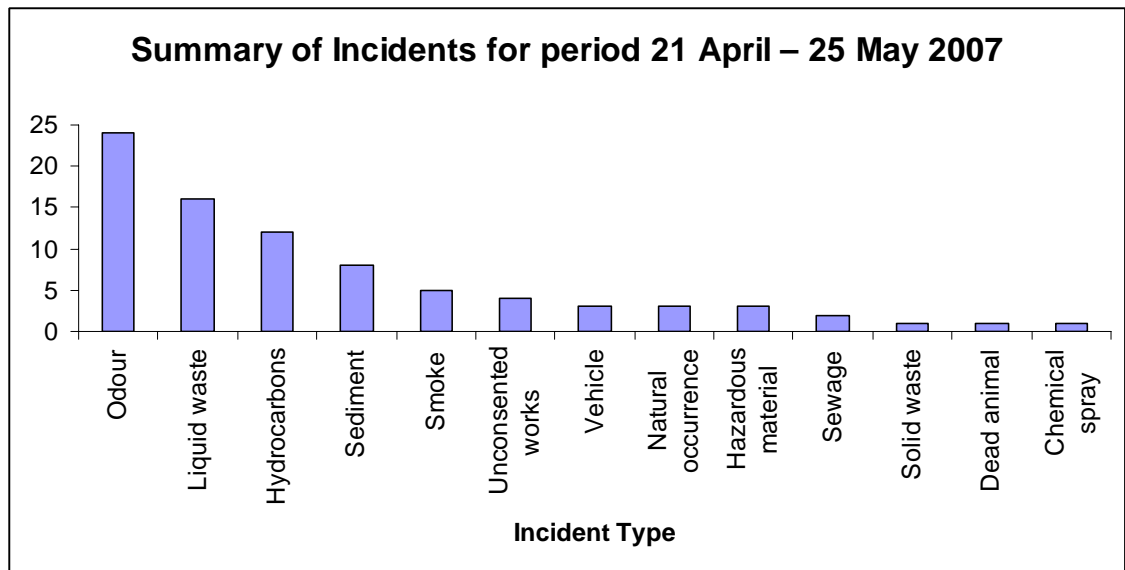


Figure 1: Summary of Incidents for period 21 April – 25 May 2007

A farmer filled in part of a stream in Waikanae and diverted the water through neighbouring properties. Approximately 9 culverts of various sizes were installed. Pollution Control is currently considering enforcement options.



Pollution Control Officers discovered a workshop in Te Horo is discharging contaminated waste water onto land. The discharge contaminated a large area of soil and vegetation. The owner of the workshop has been served two abatement notices to remove contaminated soil and provide a facility to prevent the illegal discharge of contaminated wash water onto land.



In Gladstone, the landowner was unaware that an old quarry site was being used as a tip. The rubbish was household refuse and white-ware (fridges, stoves etc).

Before



Following GW advice, the landowner worked with Carterton District Council to remove refuse and remediate the site. With credit to the landowner, it was cleaned up very quickly.

After



3.2 Incident significance

The incidents are assessed for significance as determined by the severity, duration and extent of environment effects. This ranking is used to track incident trends. The majority of incidents attended were considered to have minor adverse affects. The incidents categorised as “not assessed” are those where officers did not attend the scene, or where officers were unable to assess the severity, duration and extent of environmental effects.

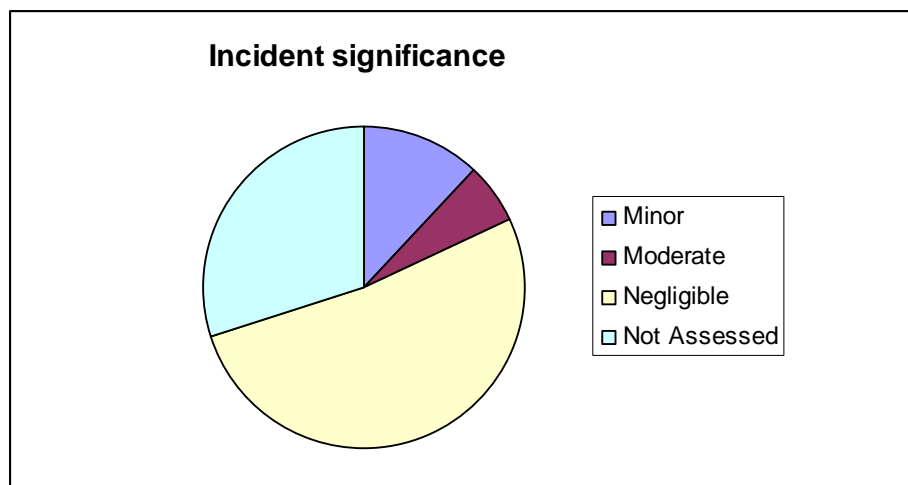


Figure 3: Incident significance for period 21 April 2007 – 25 May 2007

3.3 Response summary

The time between receiving an incoming complaint and attending on site (response time) is used as a performance indicator for the incident response service. Table 1 shows that all target response times were met during the period.

Table 1: Response time summary

Target response time	Mean response time
Red (60 minutes)	57
Yellow (24 hours)	4.5
Blue (7 days)	1.8

4. Enforcement action

Table 2 summarises enforcement action taken during this reporting period.

Table 2: Summary of enforcement action

Regulatory tool	Number issued
Advisory Notices	4
Infringement Notices	5
Abatement Notices	4
Enforcement Orders	0
Prosecutions (& information's laid)	8

These are summarised in the manager's report 07.360.

5. Take Charge

Grenada North

Pollution Control officers collected a series of stormwater and sediment samples in the Takapu Stream. These are intended to characterise the contaminants discharging from the Grenada North Business Park.

Take Charge visits have been scheduled to be completed by the end of June 2007. During the visits additional sustainable business opportunities will be offered such as EnviroSmart and No Throw Waste Exchange.

6. Special projects

Agrichem Collection

The collection project is a joint venture between GW and the Ministry for the Environment aimed for private landowners who wish to have agrichemicals

collected from their properties. This may prevent illegal dumping of chemicals to land. Currently Pollution Control are finalising the type and quantity of each chemical for collection later this year.

Watercourse pamphlet

Pollution Control and Flood Protection have co-developed a watercourse pamphlet which is in the final stages of production. It is aimed at landowners to provide guidelines on how to manage watercourses on their property.

Discharging fire sprinkler waste water

Pollution Control Officers peer reviewed an article to appear in the Fire Protection Association Newsletter (FPA) regarding disposing of fire sprinkler waste water. After an initial meeting with Wormald, they wrote an article outlining the responsibilities of FPA members when servicing sprinkler systems to ensure they comply with the Resource Management Act and ensure contaminants are not discharged to the environment. The article detailed current practice for servicing sprinkler systems and enforcement action individuals and companies may be subject if they are found to be non-compliant with the RMA. The FPA newsletter will reach over 90% of contractors in the Wellington Region.

7. Communication

No further public communication is necessary for this report.

8. Recommendations

It is recommended that the Committee:

1. ***Receives the report; and***
2. ***Notes the contents.***

Report prepared by:

Report approved by:

Report approved by:

Katie Mossman
Pollution Control Officer

Al Cross
Manager, Environmental
Regulation

Nigel Corry
Divisional Manager,
Environment Management
Division

Attachment 1: Incident Response Summary