

INTERPRETATION PLAN ○ BARING HEAD ○ RUA POUANUI

EXTERNAL



FINAL

04-09-18



WHAT

U On Park side of bridge (assuming standard GW kiosk at carpark end), a bilingual introduction to cultural history, plus wayfinding track choices

V Contemporary Maori carving or sculptural reference at karaka grove. Small interpretive post.

W Maori carving on occasional seats. Track markers with carved/laser-cut references to Maori gardens on these flats.

X Way Markers with etched references to pump house passed when arriving from both directions. With *minimal* text, this means there need not be signage interfering with the building itself.

Y Way Markers with etched references to open country birdlife.

WHY

References in both design and content to the previous settlements and peoples of this area.

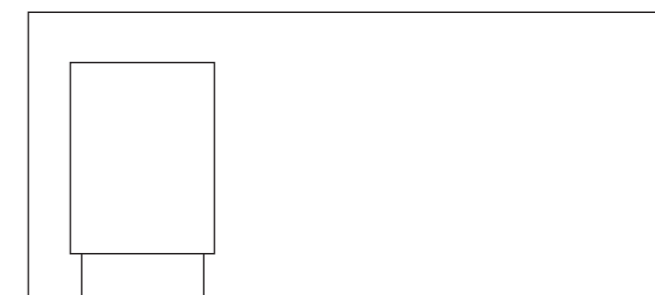
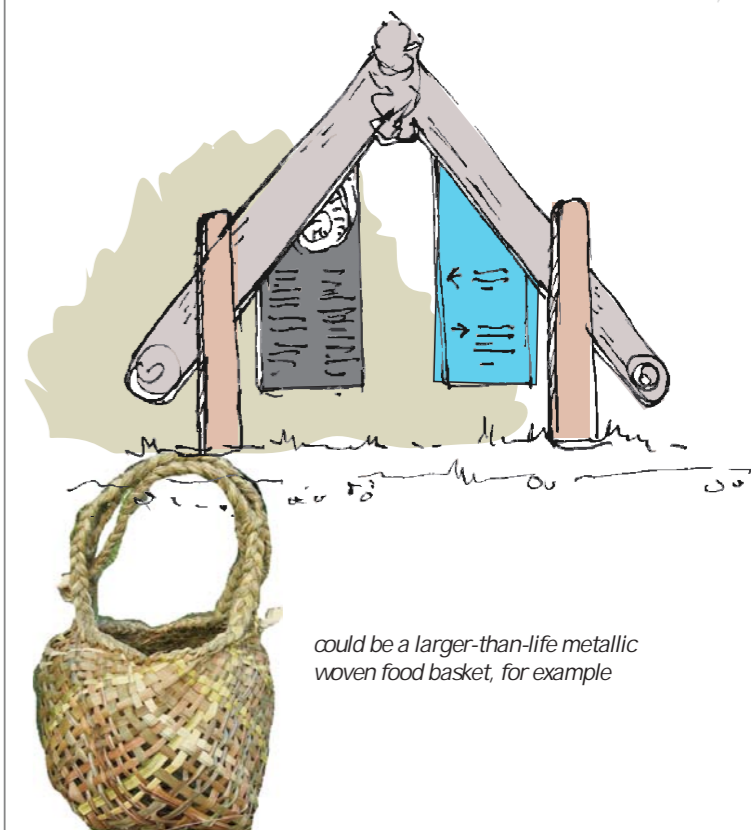
Large sculpture draws attention to the karaka in making them have some significance. For walkers a small explanatory message is all that is required.

Maori references 'reclaim ownership' of this area of past settlement and activities. Carving should be site-specific to activities (crops, fish, etc)

A 'significance' alert for pump house. Cryptic wildlife for this area - cicada, fish, skinks.

Identification of birds likely to be seen, e.g. lark, pipit, hawk, magpie... with a brief 'story'.

HOW (concept only)





WHAT



Way Markers with etched references to WWII observation post.



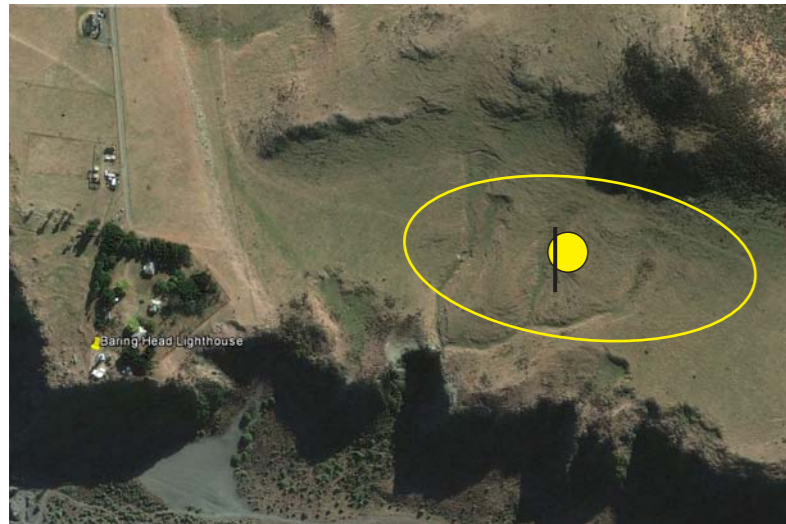
Panel on Corten steel frame within the fence of the WW2 house site. This panel to explain the entire compound of buildings, leaving people to explore on their own. Refer drawing WW2



Way Markers with etched references to open country birdlife and lizard life (near scrub).



Fence-fixed signage referring to faultline. Choose location close to track and with good view along uplift line. This can have expanded interpretation within Powerhouse.



WHY

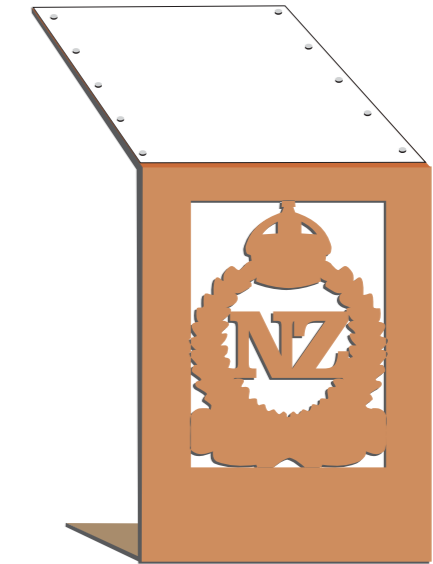
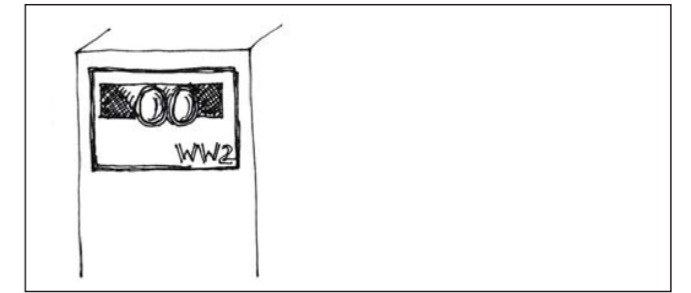
A 'significance' alert!

Inside fenced area to protect from stock

Identification of birds likely to be seen, e.g. paradise shelduck, starling . . . and lizards e.g. common skink, copper skink, common gecko, spotted skink

Recognition of major landscape feature

HOW (concept only)





WHAT



Track markers with lasercut references to raised marine benches.



Entrance into settlement through a re-created portion of manuka brush fence. No need for explanation here, as historic photos elsewhere will explain it.

Panorama 'wheel' (refer *dwg WHEEL*) with interpretation of landscape views, coastal processes, Maori history of old pa, gardens, other coastal settlements, the Riddifords and their Station.



Welcome to the Settlement. Signage on corner of Powerhouse facing entry will provide a plan overview, rules, contacts and information about accommodation. [NOTE second sign at Entry to Powerhouse, same style but in Powerhouse Package] Freestanding on concrete using perforated metal frame to maximise wind resilience. Try to avoid penetrating building wall with fixings.



Lookout complex (refer *dwg LOOKOUT*) with 'wheels' (i) helping judge Beaufort Scale, and (ii) panorama of Cook Strait features utilising the police aerial platform with additional elements and sea ng

WHY

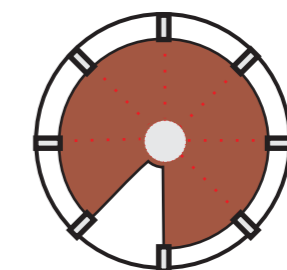
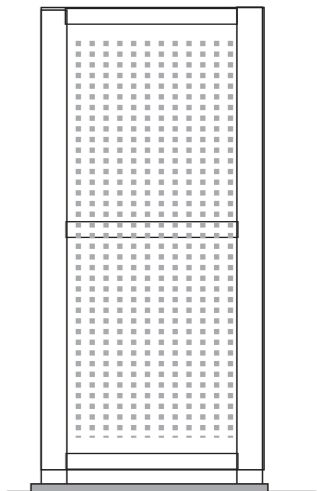
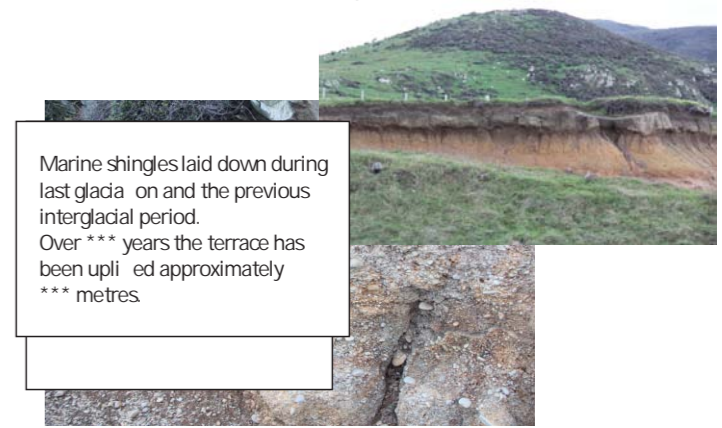
Track takes you through a cross-section of rounded pebbles and grit covered in loess, as well as rock outcrop. This needs explaining. Fuller interpretation can be found within Powerhouse, but this is a 'significance alert'.

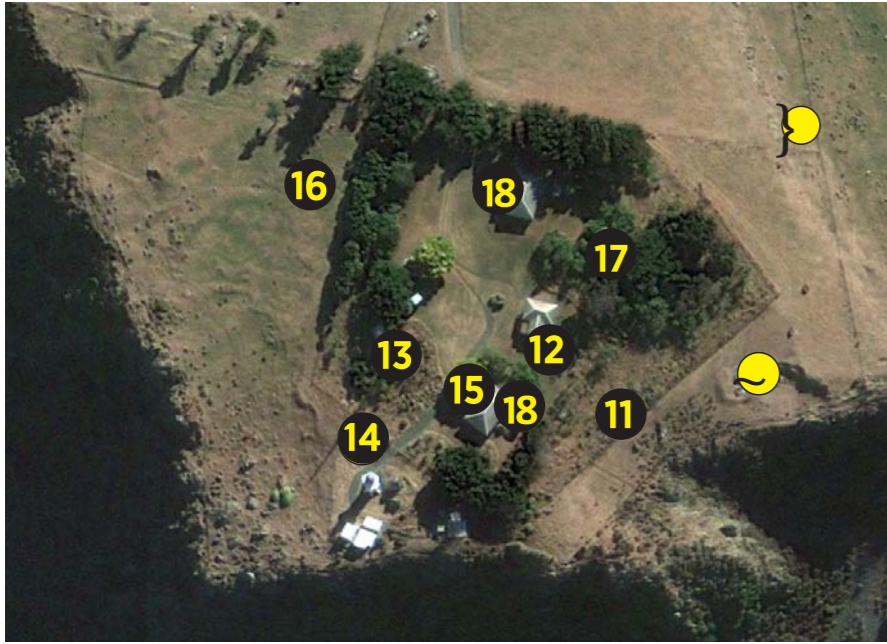
This is a 'significance alert' as well as a wayfinding tool.

Preferably located within brush fence (for sense of safety) illustrating geomorphology features such as uplifted ranges, beach terraces, spit and lagoon formation. Can relate these to Maori occupation areas and activities.

Assumes this will continue to be the primary entry point for some years.

HOW (concept only)





WHAT

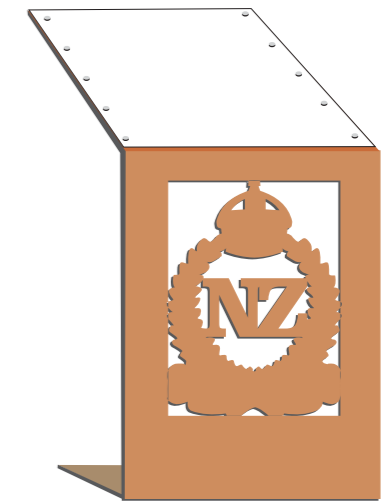
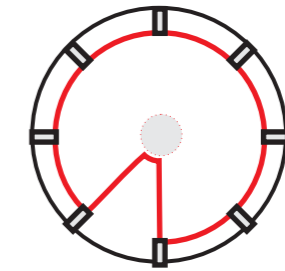
- 14** At gate/fence into lighthouse, NIWA and coastal edge paddock, offer a layout plan that includes the women's barracks with a brief explanation. Encourage exploration. Warn against too much jumping on the GNS concrete cap!
- 15** Old cypress stump re-purposed with 'wheel' (refer drawing LIGHT) for lighthouse interpretation
- 16** Ww2 naval signal station house remains; panel explaining the full radar and signal station (near lighthouse) plus brief history of WAAC in ww2. Refer drawing Ww2
- 17** Children's discovery trail
What animals were there here in the old days? What would kids have helped with? Chooks, cows, sheep, horses. Firewood. Coal. Feeding. Refer Discovery Trail page.
- 18** Accommodation houses
Detailed information about
* Friends activities and goals;
* Weeds (and what to do)
* oral histories transcribed

WHY

- By locating information at the gate, this means extra signage at the barracks ruins is not required. It also identifies the way to access these ruins.
- Lighthouse is directly ahead. Reader is orientated towards lighthouse and can readily relate historic photos to the site.
- Requires exploration to reach site, but is best tangible evidence of this part of the defense complex
- Re-populate the area that was once the house garden for the Keeper
- Inspire and encourage visitors to engage

'Re-populate' the houses with their previous inhabitants

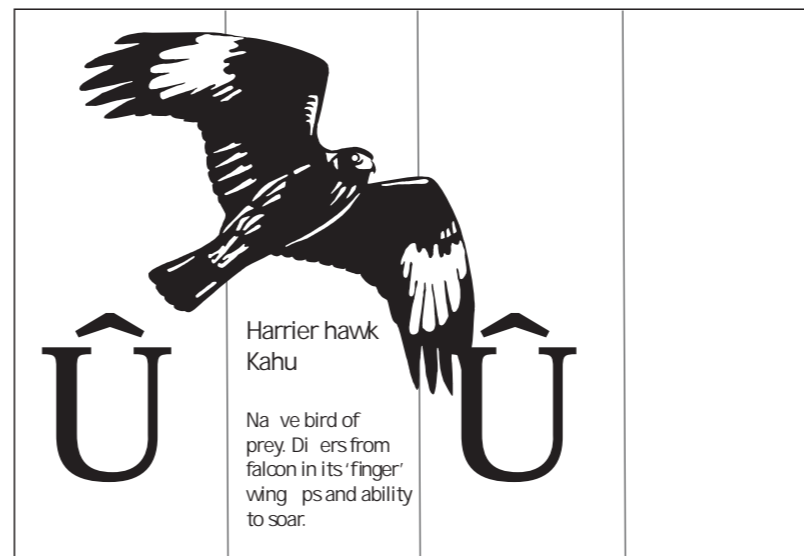
HOW (concept only)



- Sculptural references might include: horseshoes, sheep bones, steel chooks, rooster.
Guess the activity associated: milk pails, shears, hay bale etc
Problems to deal with - rabbits, hawks, rats
- Inspire and encourage visitors to engage

Could use Izone prints as formica tabletops.
Provide books in library.
Provide pamphlets.
Provide custom written material.
Don't forget the toilet needs reading material!

WAYMARKER



Engraved, folded ACM screwed to top of existing posts to create a highly visible, stock-proof waymarker which can also carry relevant graphics. Style of graphics can be explored further.

- UV stable.
- Cheap, readily replaced.
- Deters birds from perching.
- Directions can include text.
- No new structures required (if posts are well located).

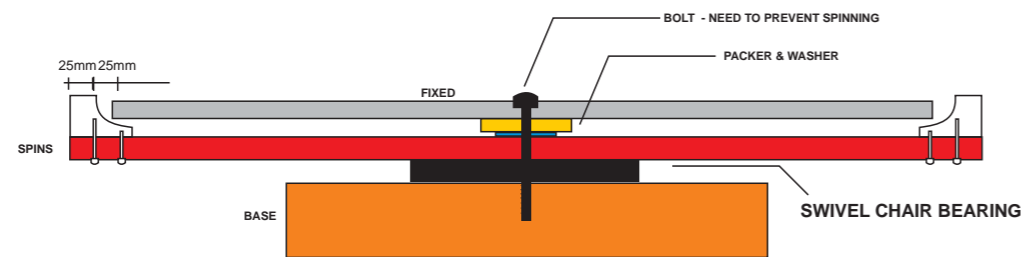
- Use different colours for
1. River to Lighthouse track
 2. Road to WWII to Lighthouse track
- This should help with the distinctions between tracks at arbitrary intersections.



'WHEEL' CONCEPT



1000mm diam, 12.7 5mm Izone
900mm diam, 12.7 mm Izone

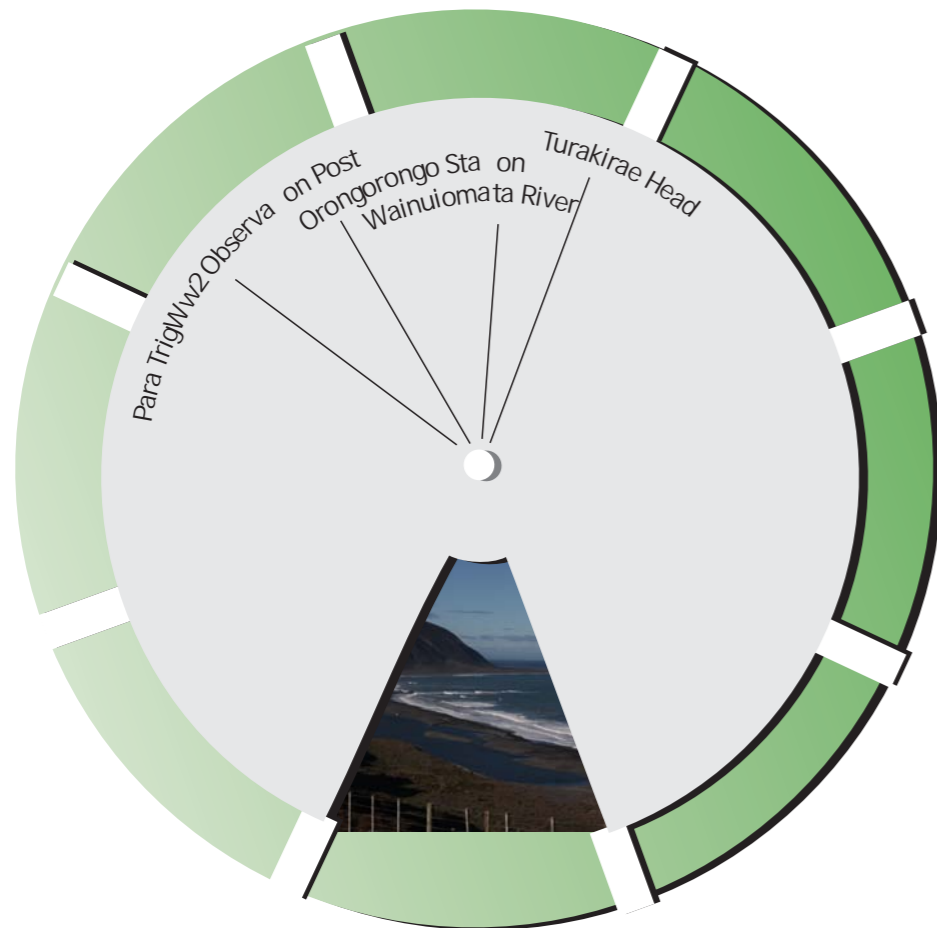


-] Requires reader to have physical input
-] Robust materials (Izone) with high wind resistance
-] High UV stability. Only 1 printed section exposed at a time.
-] Design relates to the lighthouse structural elements





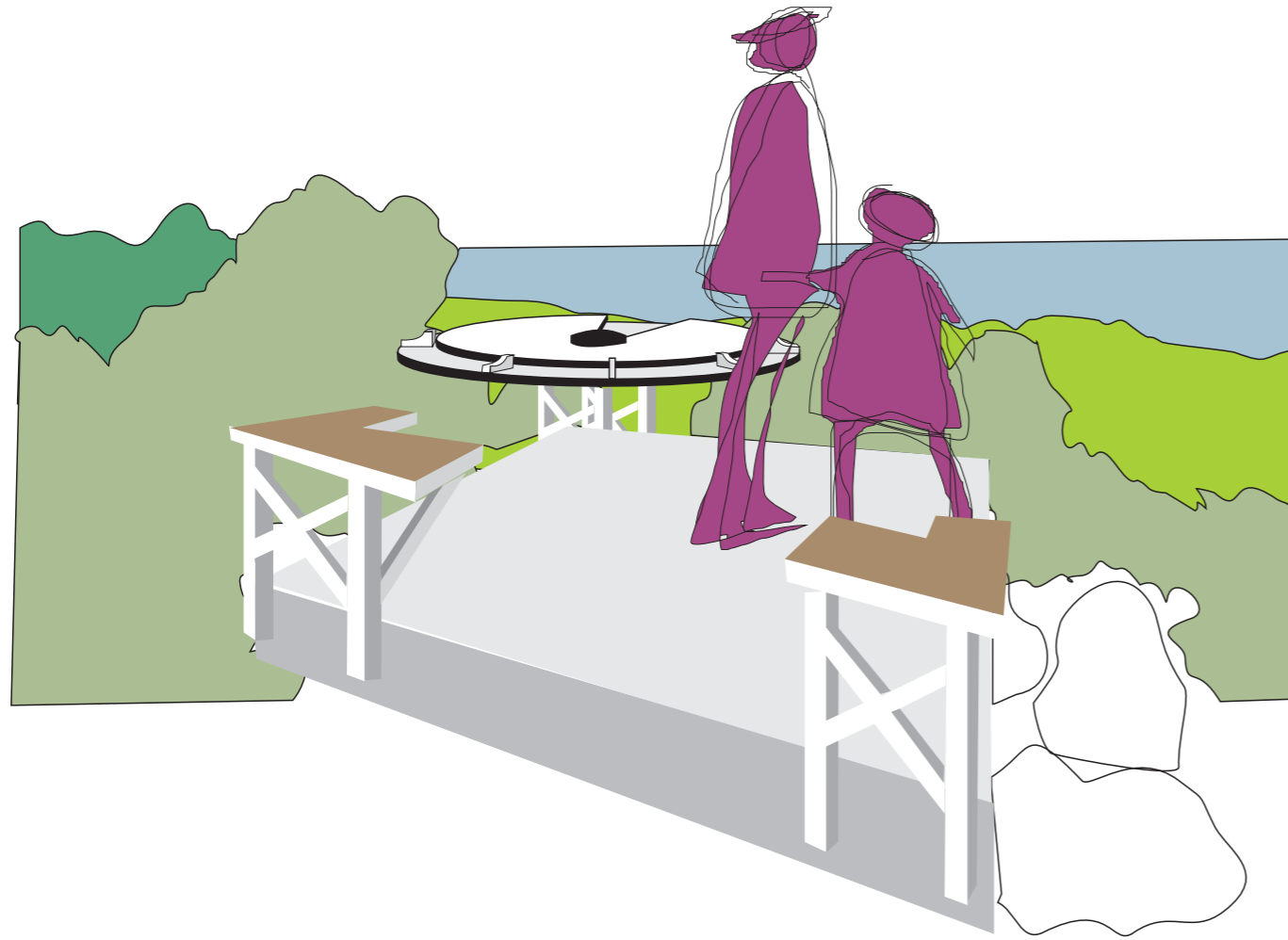
-] When work began 1934. Conditions
-] Why this location?
-] Delivery and erection of the dome
-] The light flashing sequences
-] Light maintenance; the original bulbs; the new LED bulb
-] First electrified lighthouse; second radio beacon



-] Riddifords of Orongorongo Station; donation of land
-] Orongorongo River - its steep nature, shingle flushes (Orongorongo Station in 1930s)
-] Longshore Drive evident at Wainui bar. 1855 EQ shingle from Orongorongo now reaching Eastbourne.
-] Turakirae raised beaches; this older, raised coastal platform
-] Birds of the estuary

13 POLICE LOOKOUT

This land is owned by NZ Police



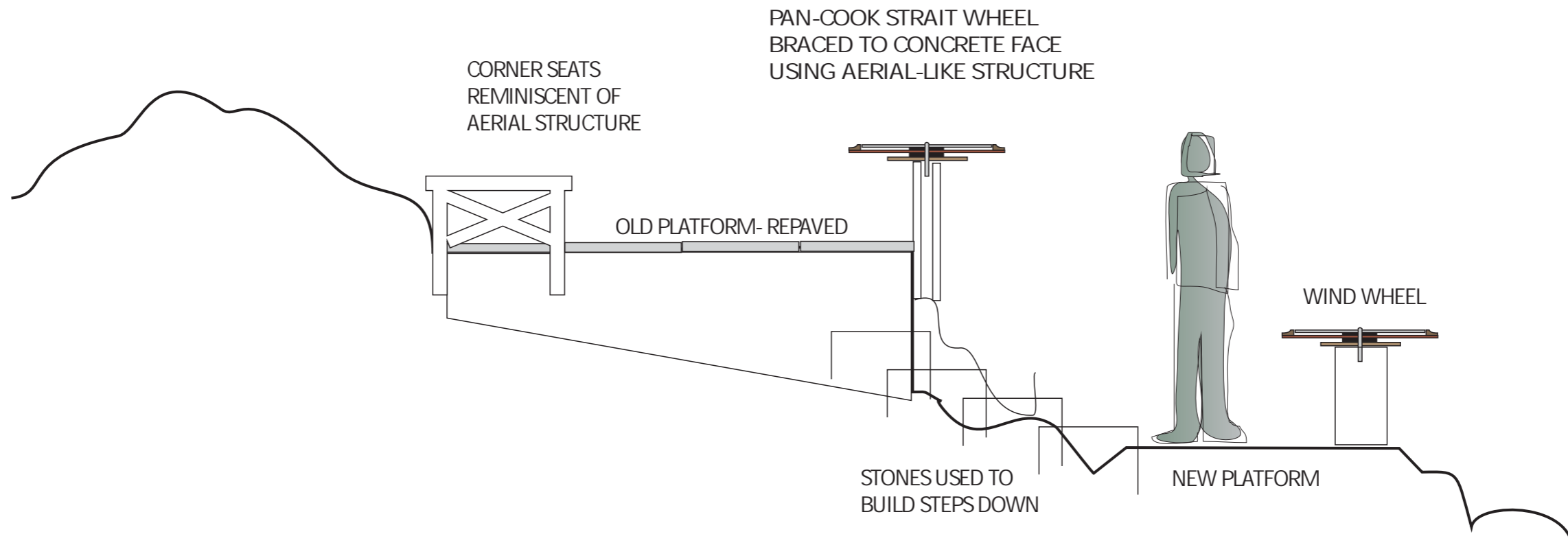
STONE PATHWAY to lookout

AERIAL PLATFORM = 3m x 3m

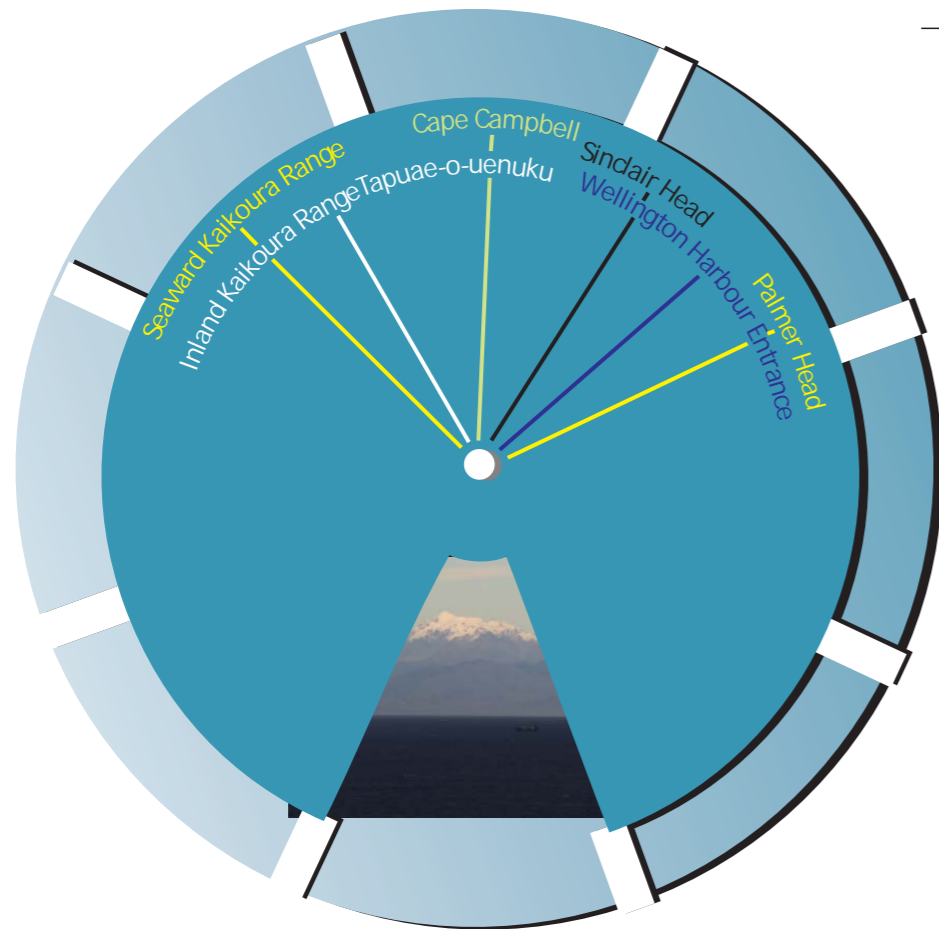
Drop from front right corner is 860mm down onto stone.

Drop from front left corner is onto a concrete ledge @ 380mm down.

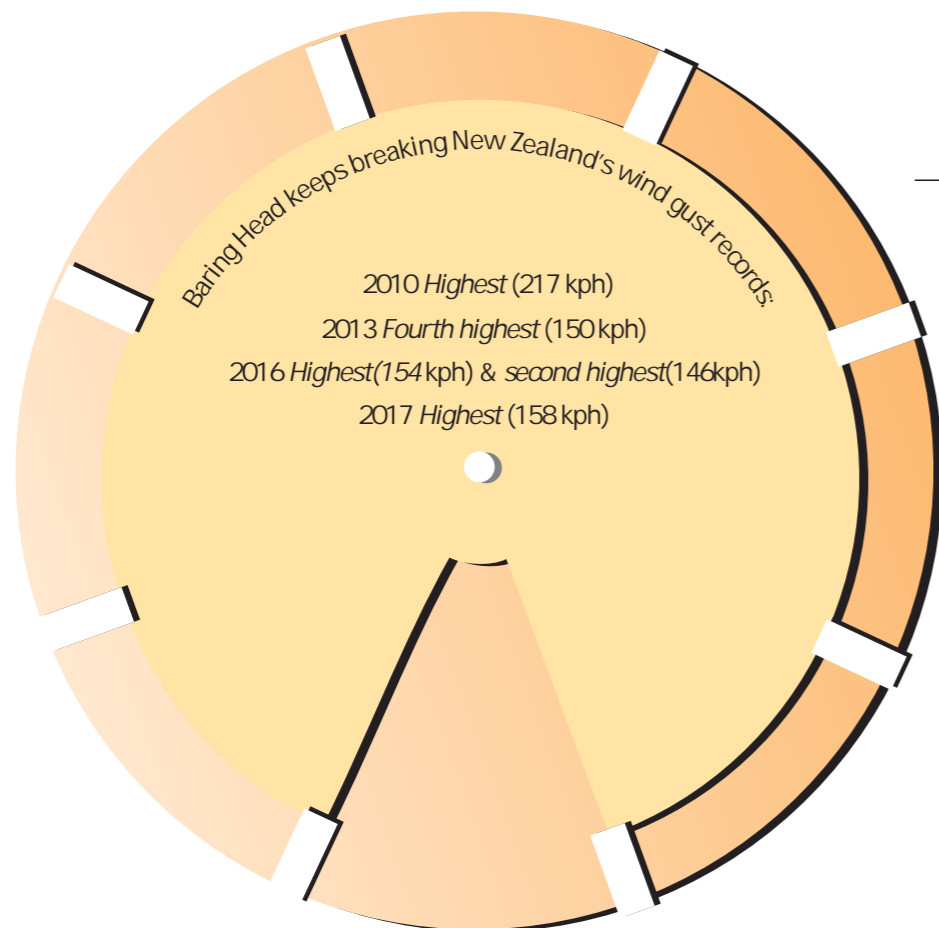
Build stone steps down at right hand corner to the top of the large flat boulder below. Fix Wind Wheel to this boulder, allowing space to stand in front.



13 PAN-Cook Strait

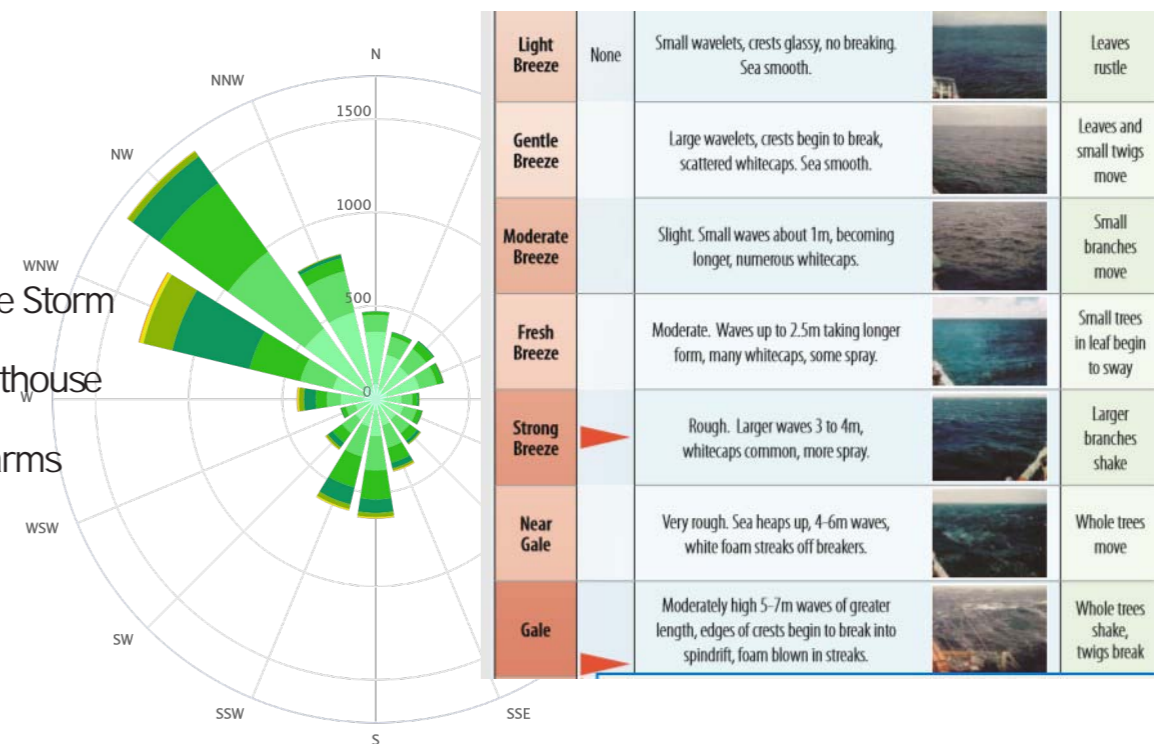


-] Identify Cape Campbell, Tapuae-o-uenuku, Seaward Kaikouras, Sinclair Head, Palmer Head, Fitzroy Bay
-] Can include distant location directions (Antarctica, Australia, Canada etc)
-] Shipping information
-] Tides through Cook Strait; difference in sea levels each end of Strait
-] Fitzroy Bay maori settlement history; Kupe and landmarks



13 WIND

-] Wind gust records
-] Beaufort Scale
-] Garage propped up after Wahine Storm
-] Flying stone breaks pane in Lighthouse
-] Cook Strait wind funnel; wind farms
-] Wind Rose for Baring Head



0 >1 >5 >12 >19 >28 >38 >50 >61 km/h



Content:
Layout of entire complex
Built 1935 to support Palmer Head Battery
More accommodation required during war
(this house site)

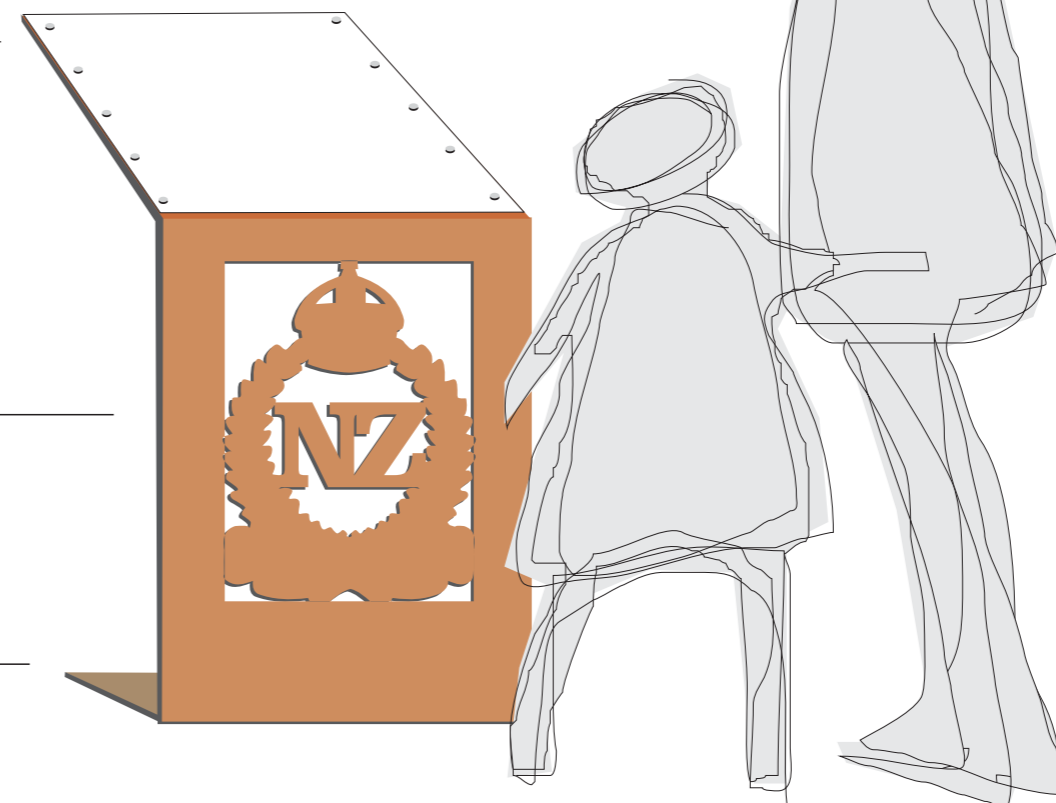


Content:
Accommodation house for WAACs
standing the signal station (where
NIWA buildings are)
Refer material in heritage report
Brief history of WAAC

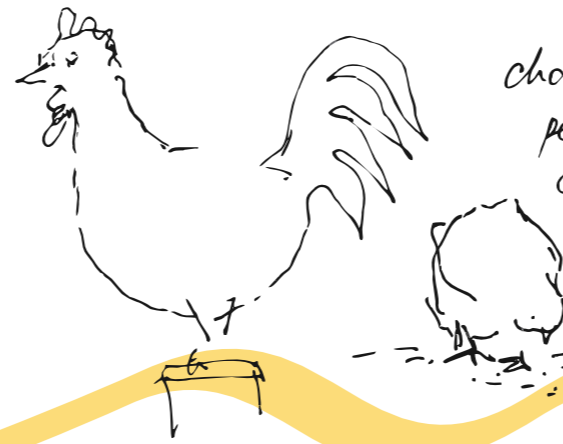
Izone panel bolted
(like riveting on steel)
to folded corten steel
frame

Lasercut Ww2 Army
Insignia

Welded Corten Steel
base, chemset into
concrete pile foundations



17 Farmyard Discovery



Chooks + roosters pecking around the chicken pen.

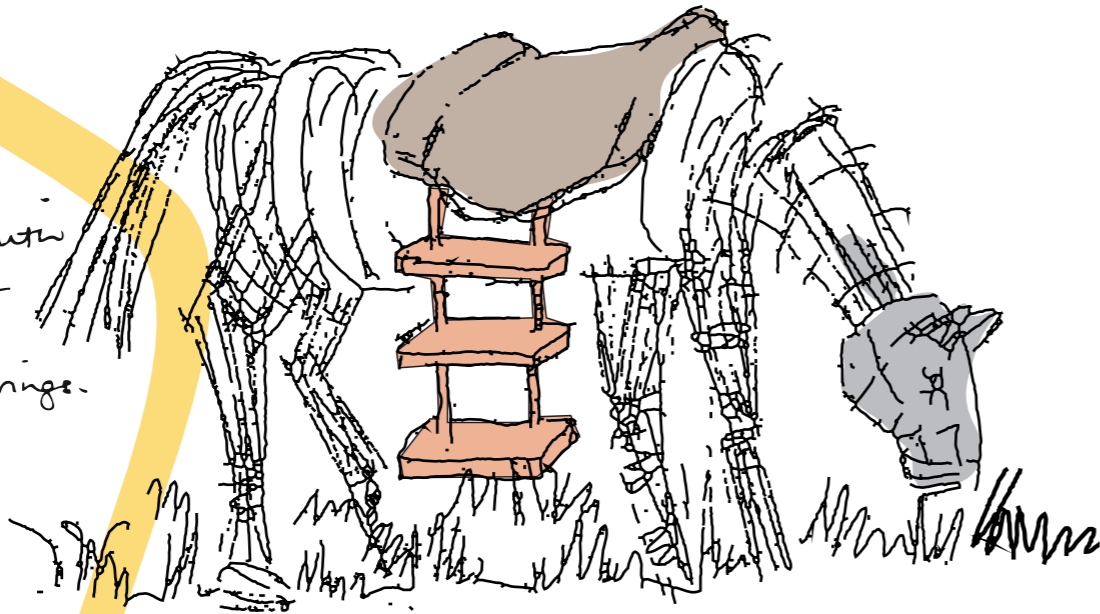


Use mulch or stones to demarcate trail
Trail with "eggs" for markers leading to chook house.

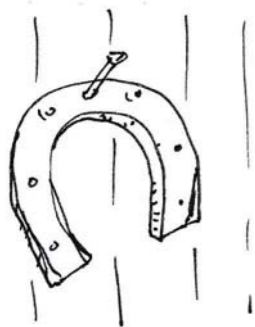


Corten steel rat, gloss white painted egg being eaten.

Steel horse, wooden saddle with ladder for easy climbing.
Rebar, plate, springs.



The Lighthouse Keeper's children had lots of animals for company. Follow the Garden Trail to discover how many.
Some were raised for food.
Some were pets. Some were pests.
Some had always lived here.



Milk pail full of "milk". Probably needs a half lid that opens so "milk" is kept clean.

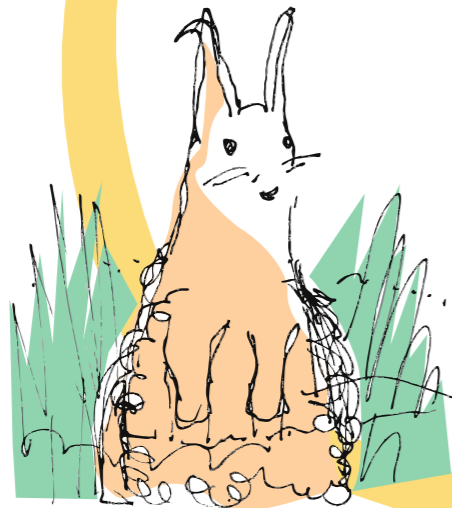


archway (child height) made from sheep bones.
Could add some fleece flags.

17 Farmyard Discovery



Corten Steel geckos & lizards basing (very realistic)



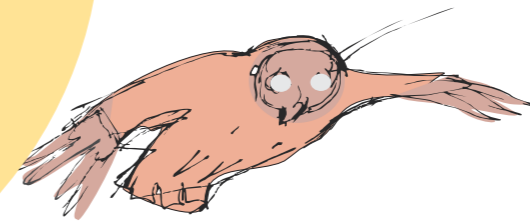
Corten Steel bunny on alert.

cut outlines and push outwards for slight 3-D effect.

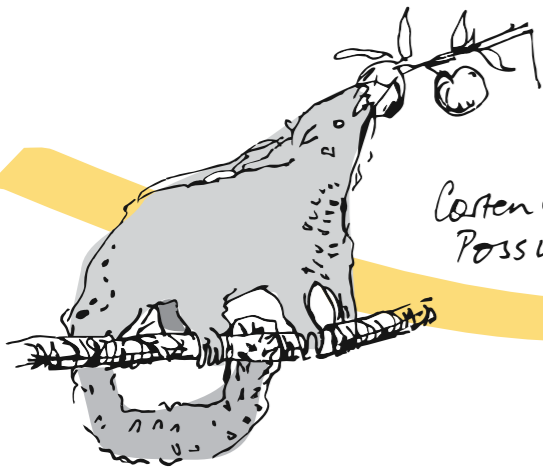
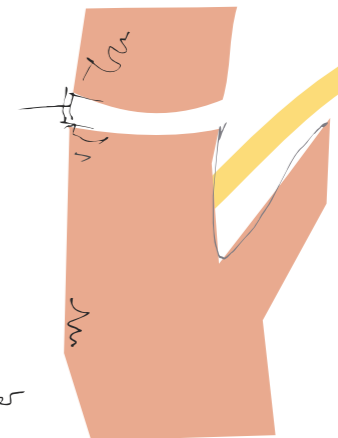
The Lighthouse Keeper's children had lots of animals for company. Follow the Garden Trail to discover how many. Some were raised for food. Some were pets. Some were pests. Some had always lived here.



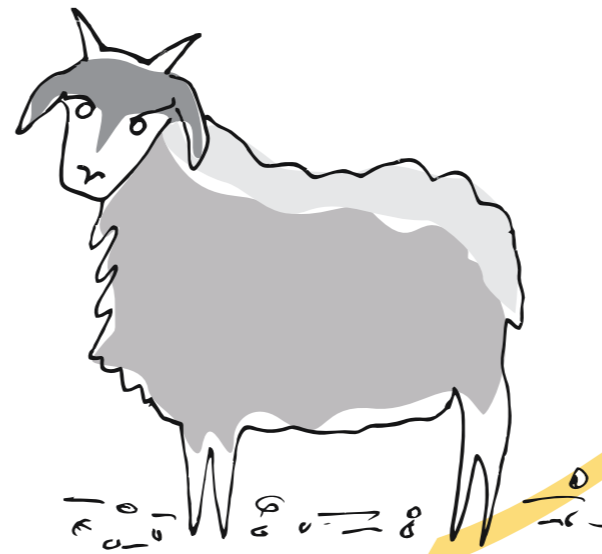
crayfish & pawa remains by the BBQ.



Morepark.
multi layered Corten steel fas
semi 3D effect
Allow fas movement on windy days.



Corten Steel - bent to wrap each side rebar.
Possum - eating. fix into a tree trunk.



17 Farmyard Discovery

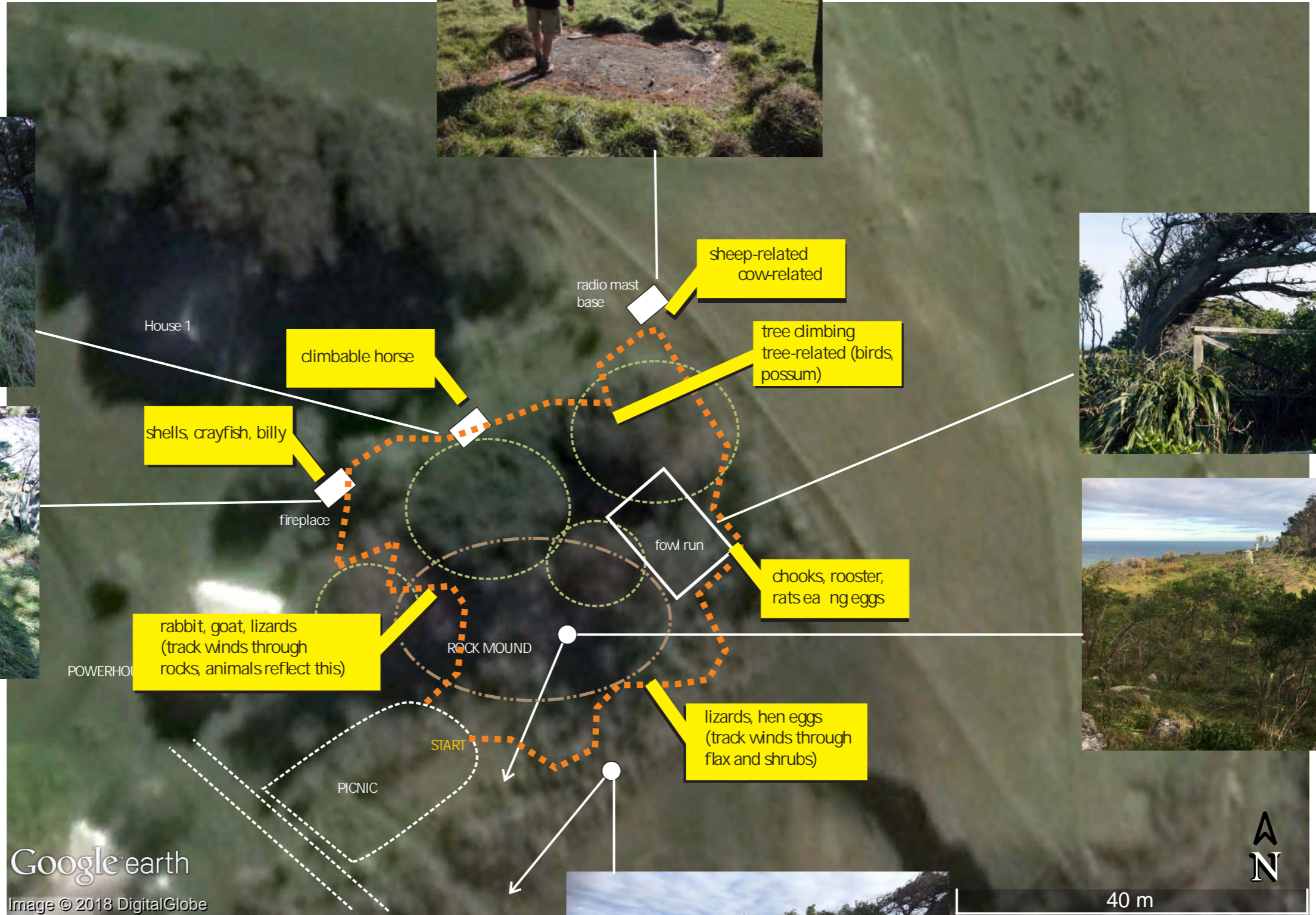


Image © 2018 DigitalGlobe