

Regional planning and urban development



Wellington Regional Strategy

- Earlier version included ‘focus areas’ – SH58/TG intersection
- Reviewed a couple of years ago, focus areas were removed – focus instead on economic growth.

A future regional Spatial Plan?

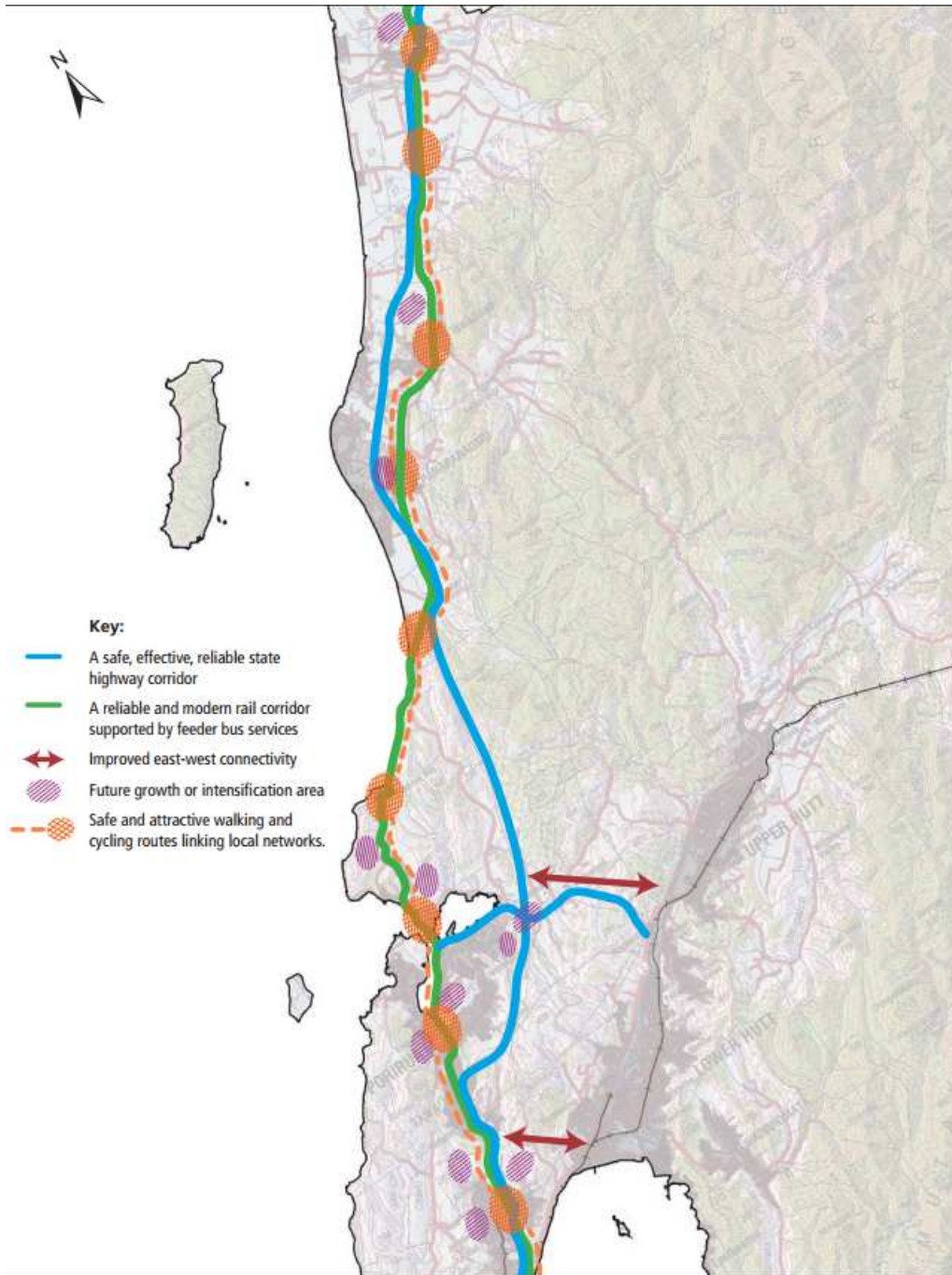
- Support – but **not immediate priority** – so currently ‘on hold’
- Would provide more specific direction on regional urban form/growth beyond

Regional Land Transport Plan 2015

- **High level policy framework** – more PT, walk, cycle use, a reliable and resilient strategic road network, providing for efficient movement of freight, improved road safety, etc
- **Corridor strategies** – high level principles; major transport infrastructure projects identified at a concept level (e.g. TG, P2G); future growth areas broadly identified on corridor map sourced from TA advice/plans/strategies
- Projects are included in a programme of activities for funding from the **national land transport fund**

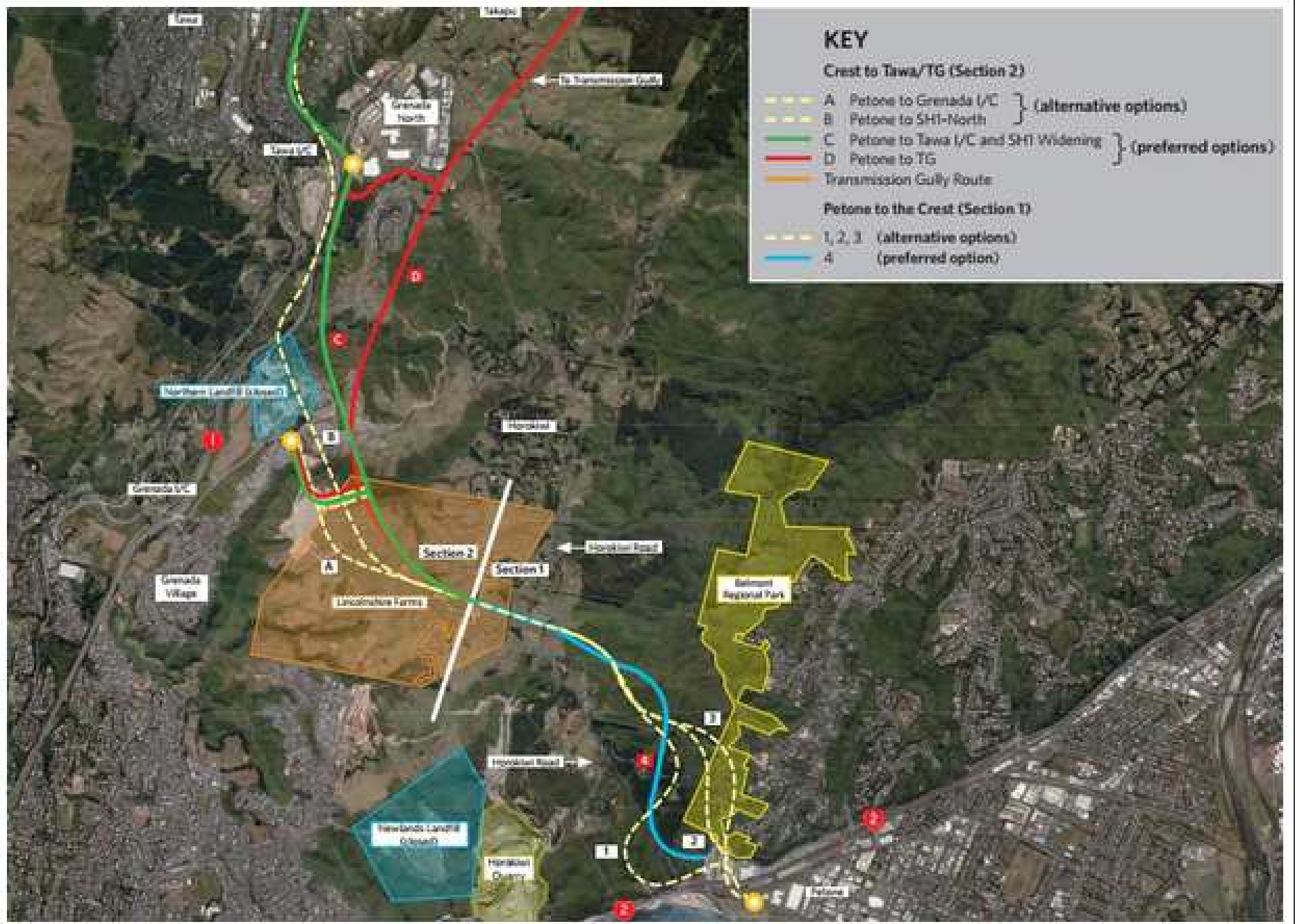


Western corridor



New roading projects

- **TG** - included in RLTP as a 'committed' project
 - Due to be completed in 2020
 - Note - lower traffic volumes predicted to use Grey's Rd and SH58 West of TG along the inlet.
- **Petone to Grenada Road** - Included in RLTP as 'priority 3' among the 'large new improvement projects' list
 - NZTA Board to decide on preferred alignment option by end Oct, then AEE prep and consent to be lodged mid-2016.
 - Will involve significant earthworks. Impacts on Porirua Stream catchment and Porirua Harbour are part of the options assessment process and future AEE process.
 - Construction start indicative 2019, complete 2024





Te Awarua
o Porirua
Whaitua
Committee

greater WELLINGTON
REGIONAL COUNCIL
Te Pane Matua Taiao

Regional Policy Statement

- Policy direction to city and district councils at the time of **district plan changes** and **resource consents**
- Compact, well-designed and **sustainable regional form**
- Managing development in **rural areas**
- **Integrating** land use and transportation



